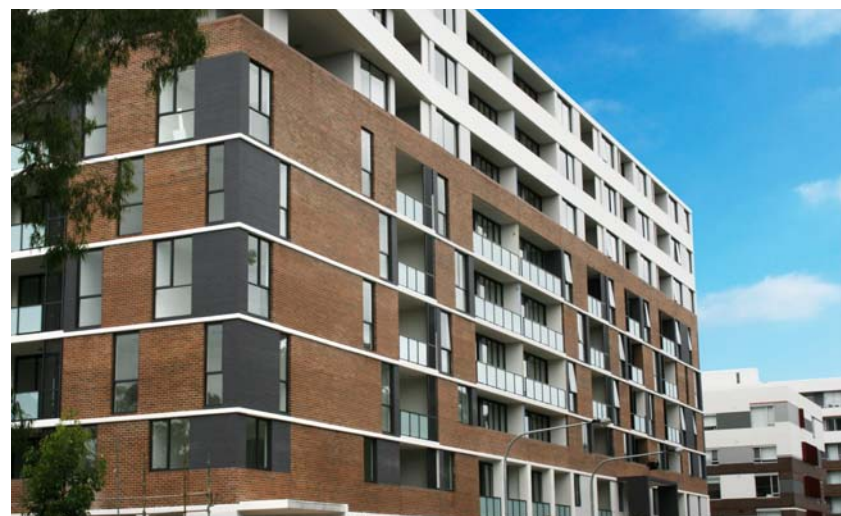


PROJECT POWER

Building multi-residential from top to toe



• COMO APARTMENTS, WASHINGTON PARK, RIVERWOOD NSW

LOGICWALL® helps turn a hospital site into a healthy neighbourhood

The advantages in using AFS LOGICWALL® and AFS REDIWALL® are most obvious on large-scale sites and the Washington Park development demonstrated them fully. Design and construction company DASCO knew they could depend on AFS for on-time delivery of both walling systems and that the lightweight panels would make materials handling quicker than alternatives.

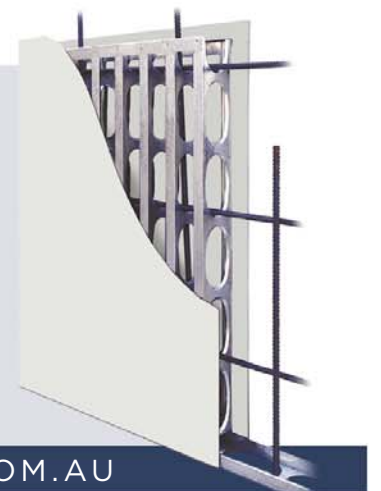
And, as the systems are AS3600 compliant, DASCO enjoyed the convenience of dealing with just one supplier for reliably superior solutions to above- and below-ground walling demands.

197 UNITS	10 STOREYS + 2 basements
689m ² REDIWALL®	13,485m ² LOGICWALL®

- AFS REDIWALL® 200mm basement walls
- AFS LOGICWALL® 120mm internal walls
- AFS LOGICWALL® 150mm internal walls
- AFS LOGICWALL® 162mm external walls
- AFS LOGICWALL® 162mm party walls
- AFS LOGICWALL® 162mm blade walls
- AFS LOGICWALL® 200mm lift & stair walls
- AFS LOGICWALL® 200mm party walls
- AFS LOGICWALL® 200mm blade walls

Don't just take our word for it...

"We used AFS LOGICWALL® and REDIWALL® on our Washington Road, Riverwood Project. I found the AFS LOGICWALL® system to be faster, more efficient and offer greater ease of materials handling than conventional walling construction methods. Based on our experience on this project we'll definitely consider AFS for future projects". Chris Fiore **DASCO**.



1300 727 237 • SALES@AFSWALL.COM.AU • AFSWALL.COM.AU