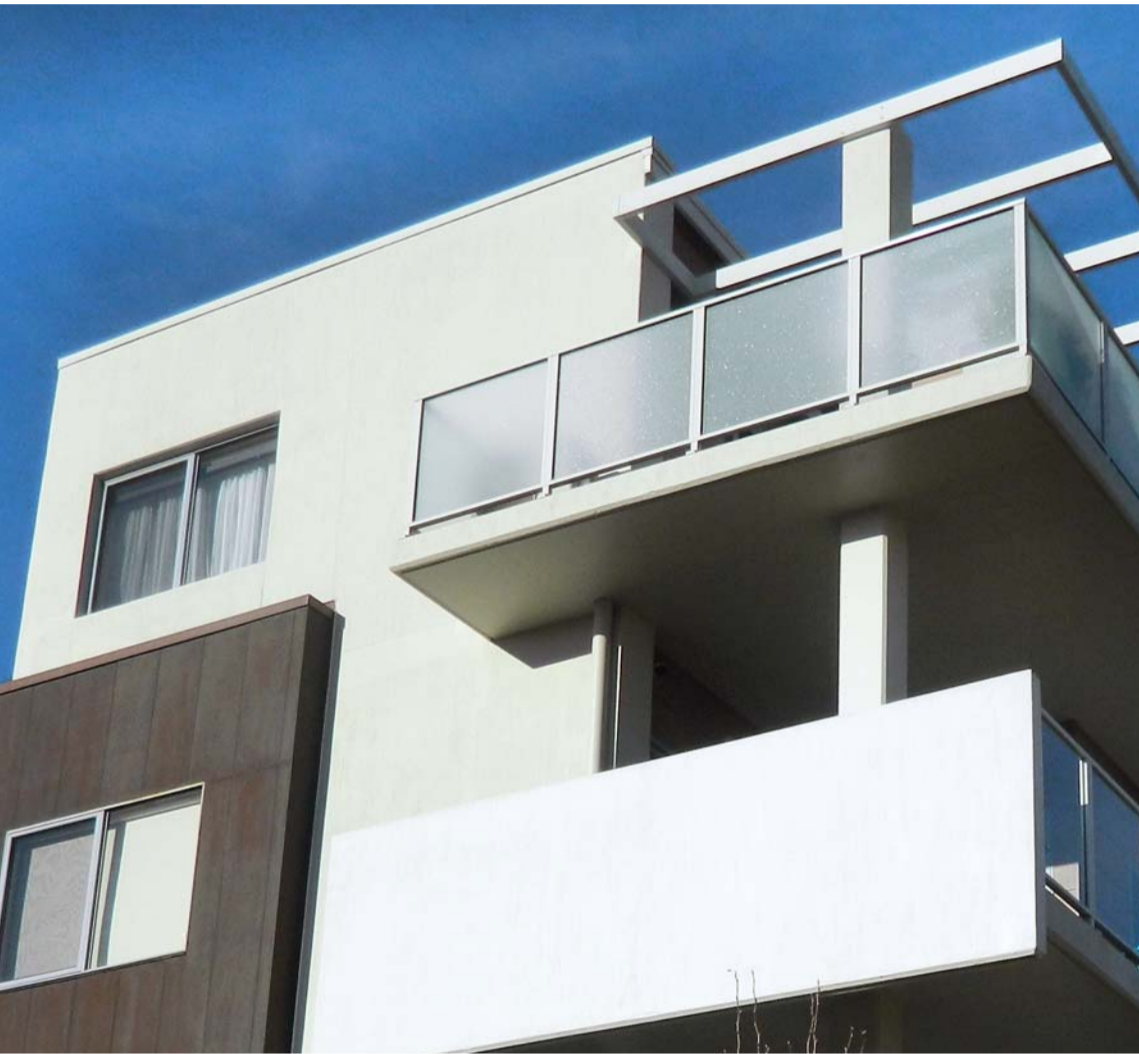


# PROJECT POWER

Award-winning architects building their reputation on better walls



• FITZROY APARTMENTS, CRACE ACT

## LOGICWALL® and REDIWALL® help plans become homes (and sales) quicker

The popularity of the Fitzroy Apartments says much about the determination of its architects to deliver a superior product. And they point to AFS walling systems as fundamental to that goal.

Renowned for their residential and commercial work, Kasperek Architects automatically include AFS LOGICWALL® and AFS REDIWALL® when considering any new project. Chief amongst their reasoning is how rapidly they can be erected and the reliably high quality both systems offer.

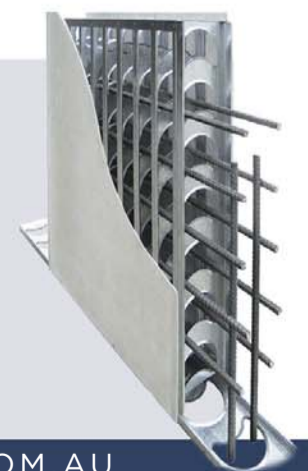
45 UNITS 12 TOWNHOUSES	3 STOREYS + basement
750m <sup>2</sup> REDIWALL®	1,927m <sup>2</sup> LOGICWALL®

AFS REDIWALL® 200mm basement walls  
AFS LOGICWALL® 120mm party walls  
AFS LOGICWALL® 120mm external walls  
AFS LOGICWALL® 120mm lift & stair cores

Don't just take our word for it...

"We have designed and documented hundreds of units, in projects ranging from 24 to 200+ units. And every one of them has some AFS walling system in it. They are true, quick to put up and fast to finish.

So we get quicker construction and a better quality product." Fred Kasperek, KASPAREK ARCHITECTS.



1300 727 237 • SALES@AFSWALL.COM.AU • AFSWALL.COM.AU