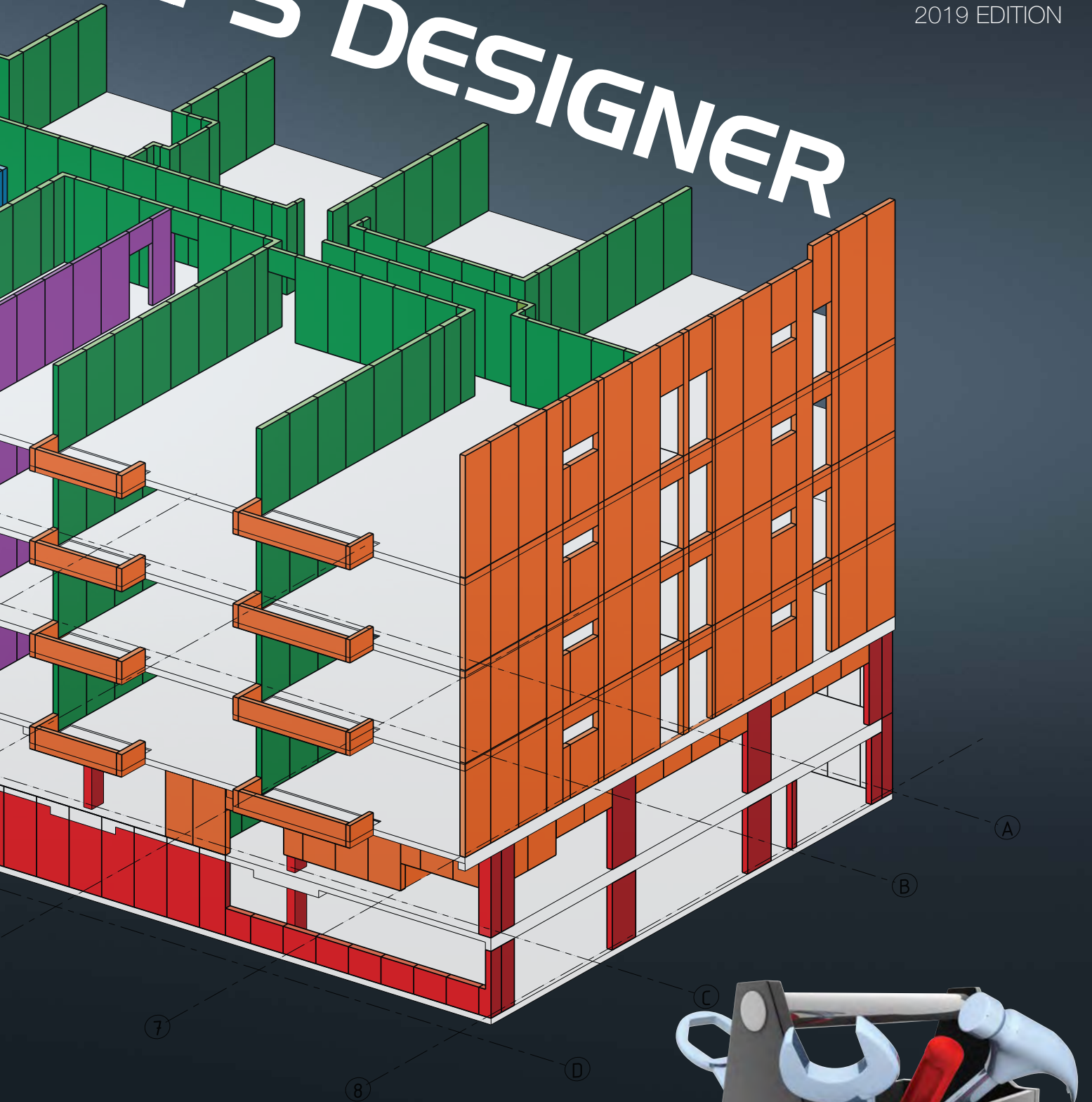


AFS DESIGNER



afs logicwall®

CSR

H | Environmental Matters

H1 Introduction

H2 Energy Efficiency

This chapter of the AFS Designer must be read in conjunction with all chapters of the AFS Designer.
Important legal statements on inside back cover.

H | Environmental Matters

Disclaimer: This section of the AFS Designer is intended only by AFS to represent good building practice in relation to AFS LOGICWALL® and environmental responsibility. This section is not intended in any way by AFS to represent all relevant information required on a project in relation to environmental matters. It remains the responsibility of those using AFS LOGICWALL®, including but not limited to, builders, designers, consultants and engineers, to ensure compliance with environmental laws and regulations.

H1 Introduction

AFS as a company is committed to delivering products and manufacturing processes which are both innovative and environmentally responsible. The company has invested in and installed systems to target recycling of raw products, in particular galvanized steel and timber packaging products.

H2 Energy Efficiency

AFS LOGICWALL® walls being a monolithic concrete barrier possesses inherent features which greatly assist the designer in achieving the objective of thermal mass and air tightness.

The BCA recognizes the benefit of thermal capacities or mass, and so provides R concessions for heavyweight walls such as those incorporating AFS LOGICWALL®.

Heavy mass delays the transfer of outdoor temperature variations, improving indoor comfort. The concrete construction of AFS LOGICWALL® walls provides a significant thermal mass barrier to the external elements. This in turn not only enhances

occupant comfort, but also reduces heating/cooling costs and energy consumption whilst improving acoustic performance of the wall against outside noise.

Due to AFS LOGICWALL® walls being a uniform concrete monolithic mass, the air infiltration rate is practically zero eliminating the possibility of drafts and currents from outside. This contributes significantly to the thermal insulation of the building.

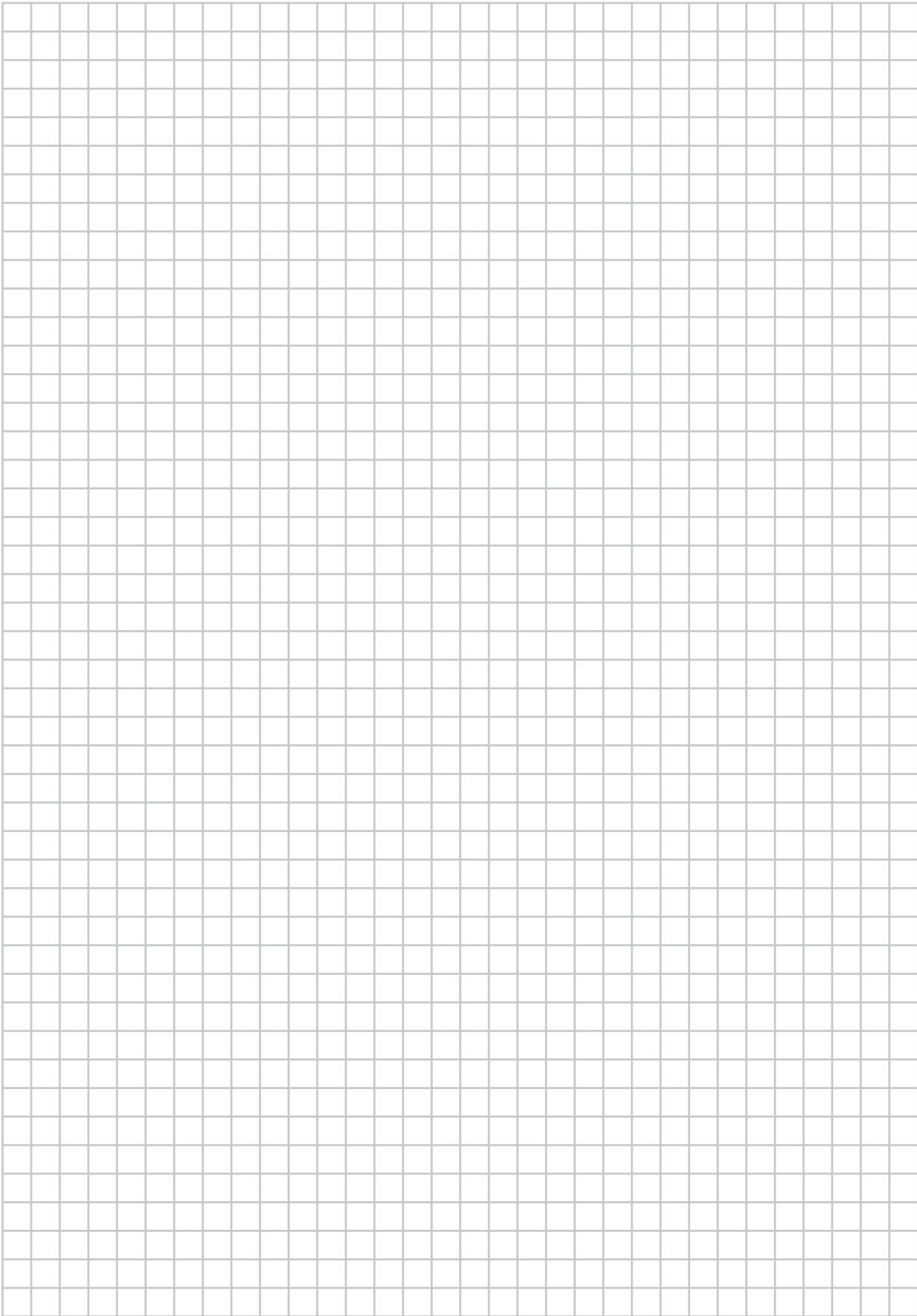
Refer to section G4 of this manual for further details on Thermal Insulation.

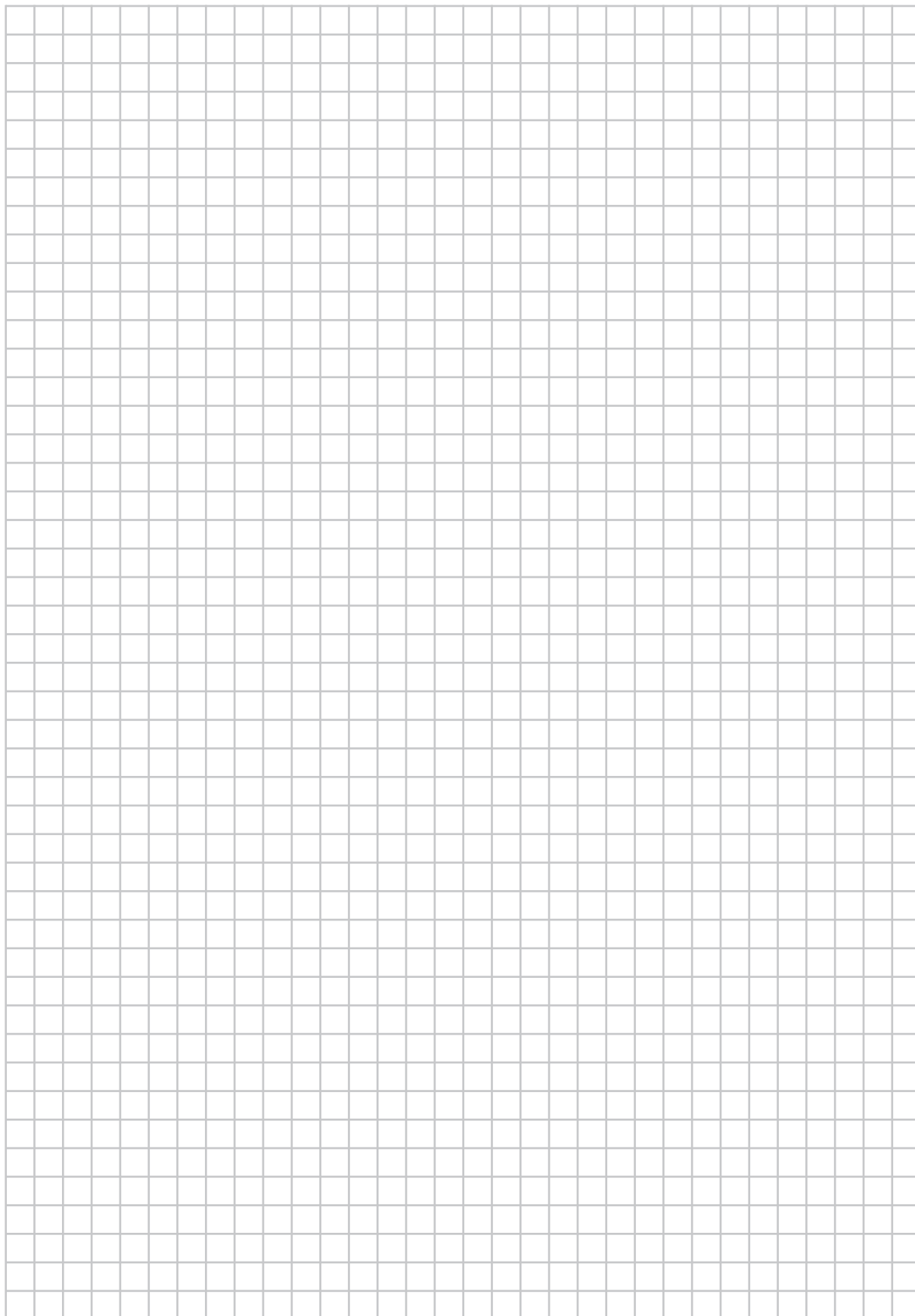
Core Environmental Performance Characteristics	
Applicable Standards	The nominated product has been tested for fire resistance and acoustic performance by CSIRO. Also, the nominated product has been independently tested for insulation properties.
Other evidence of Fitness for Purpose	As well as being tested for performance qualities, the nominated product has demonstrated market acceptance via numerous current installations across Australia.
Environmental Load Reduction	The nominated product produces a load reduction of greater than 30% for greenhouse gas emissions due to the savings associated with flyash and slag utilisation at a rate of 35% of the concrete. In addition there are savings in transport and savings in installation due to the modular design.
Material Requirements	The materials and manufacturing process required to produce these nominated products do not present any hazard to the manufacturing staff, the consumer of the final product or the environment.
Post-Consumer Recycling	It is necessary to bind the product to the concrete for the functionality of the product. The product may be separated during concrete recycling but it is designed for a very long life span.
Packaging Requirements	The nominated product is packaged on steel and cement board pallets with LDPE plastic wrap. All packaging materials comply with the conditions of this criterion.
Compliance to Environmental Regulations	The AFS Systems Pty Ltd manufacturing facility is located within an industrial area and complies with all relevant environmental regulations. There are no discharges from the site other than the collection of solid, non-hazardous waste.
Compliance to Labour, Anti-Discrimination, and Regulations	AFS Systems Pty Ltd provides fair and safe working conditions for all staff.

The results of the Life Cycle Impact analysis demonstrated that walls incorporating the AFS LOGICWALL® product range exhibit an overall reduction greater than 30% of greenhouse gas emissions when compared to

pre-cast concrete utilising 100% Portland cement. By incorporating an additive mixture of no less than 35% of the required design cement content the walls are able to gain this level of reduced overall GHG and Cumulative Energy Demand Impact.

H | Notes





IMPORTANT LEGAL STATEMENTS

Reasonable efforts have been made to ensure the accuracy of this publication; however, any information and data contained herein is subject to change without notice. To ensure the information you are using is correct, AFS recommends you review the latest technical information available on the AFS website www.afswall.com.au, or alternatively call 1300 727 237 to speak to a Technical Representative.

The AFS logo and LOGICWALL® mark are registered trade marks. © 2019 AFS Systems Pty Ltd.

No part of this publication may be reproduced in any form or by any means without prior written permission from AFS Systems Pty Ltd. All rights reserved.



DISCLAIMER

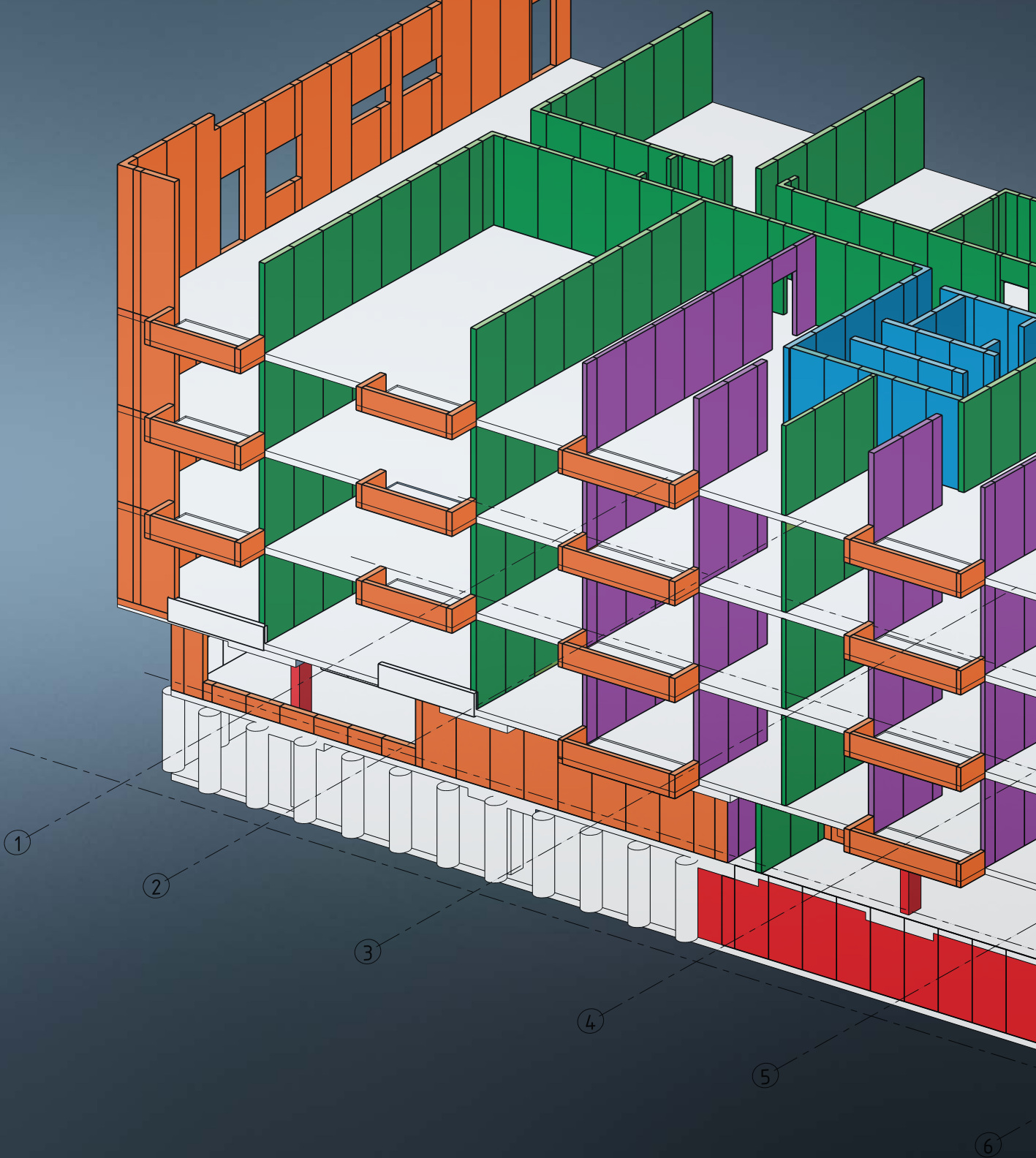
1. This technical manual named AFS Designer together with the design tables and associated information related to AFS LOGICWALL® has been prepared by AFS to assist design professionals using AFS LOGICWALL® including without limitation, developers, builders, engineers, architects or quantity surveyors with the design of structural walls.
2. It is the responsibility of the user to ensure that the use of this manual is appropriate and to exercise their own judgment when using this manual.
3. AFS does not accept any responsibility (whether for negligence or otherwise) for any consequence arising from the use or application of this manual.
4. The design and engineering of the structure of any building using AFS LOGICWALL® should only be undertaken by suitability qualified and experienced design professionals, engineers or consultants.
5. The full responsibility for the design, engineering and structural design, and certification of compliance with all relevant Australian Standards, National Construction Code (NCC) and any other statutory requirements at Local, State and Federal levels rest with the design professional, project engineer or project consultants including but not limited to the design engineer, acoustic consultant, energy efficiency consultant, fire engineer and any of their officers, employees, delegates, partners, agents and service providers of any nature.
6. AFS reserves the right to change the specifications of this manual without notice.
7. Please check with AFS that you have the latest version as the manual may be updated from time to time and certain details may change.
8. This disclaimer applies to the extent permitted by law.

DEFINITIONS

The use of the terms 'AFS LOGICWALL®' and 'AFS LOGICWALL® Walls' throughout the AFS Designer are as follows;

AFS LOGICWALL®: Refers to AFS LOGICWALL® panels as permanent formwork prior to being installed & corefilled with concrete.

AFS LOGICWALL® Walls: Refers to AFS LOGICWALL® walls installed with concrete corefill incorporated.



1300 727 237
afsformwork.com.au



AFS Systems Pty Ltd

110 Airds Road, Minto NSW 2566
ABN 45 576 072 788

1011-Jan-19

IMPORTANT LEGAL INFORMATION

Reasonable efforts have been made to ensure the accuracy of this publication; however, any information and data contained herein is subject to change without notice. To ensure the information you are using is correct, AFS recommends you review the latest technical information available on the AFS website www.afsformwork.com.au, or alternatively call 1300 727 237 to speak to a Technical Representative.

The AFS logo and logicwall® mark are registered trade marks. © 2019 AFS Systems Pty Ltd. No part of this publication may be reproduced in any form or by any means without prior written permission from AFS Systems Pty Ltd. All rights reserved.