

Creating great finishes inside, outside and often ahead of schedule.



CSR has added the renowned AFS Walling Solutions to its portfolio of trusted brands—giving customers a complete range of building products and solutions for multi-residential projects.



we put you in front

AFS Systems Pty Ltd
 AFS Unit Trust
 (Reference No 3610117595314)
 ABN 455 760 727 88
 2/34-38 Anzac Avenue
 Smeaton Grange
 NSW 2567

For more information contact:

1300 727 237

afswall.com.au

sales@afswall.com.au

For more information on the CSR range of building products call 1800 633 826



Everything else is just plasterboard



for smarter environments



Top Cat in Roofing



New World Class



Ceiling Solutions



Technologies for a Sustainable Future



The better way to build



CREATES AND CONSTRUCTS



Innovation for Better Spaces

Copyright and Permitted Use The contents of this document and all other documents, including associated or annexed reports and any information, item, test results, or material so referenced herein ("Guides") are the exclusive property of AFS Systems Pty Ltd and have been provided to you commercially in confidence. This information is copyright protected and may not be copied, rebroadcast or redistributed in any way, in whole or in part, without the written permission of the AFS Legal Department.

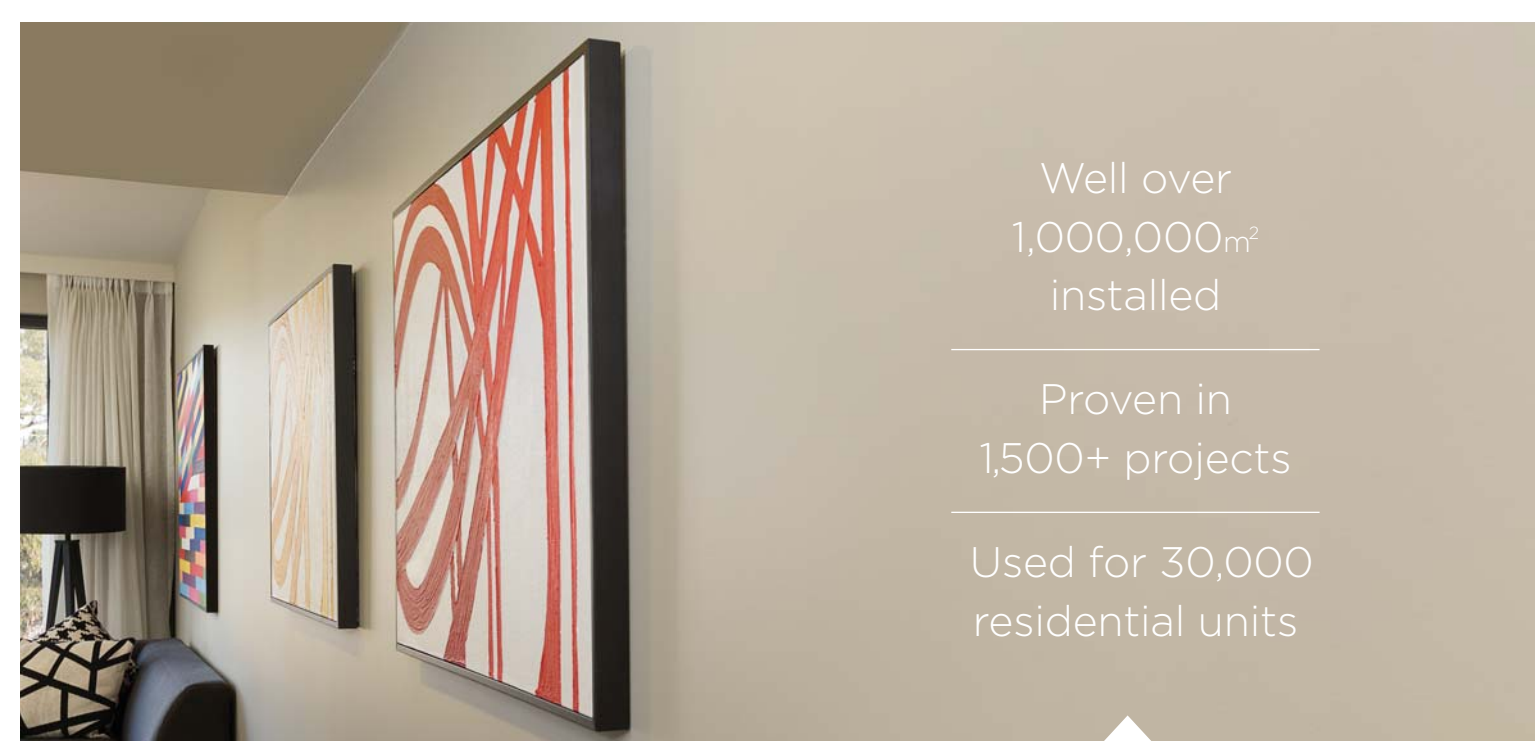
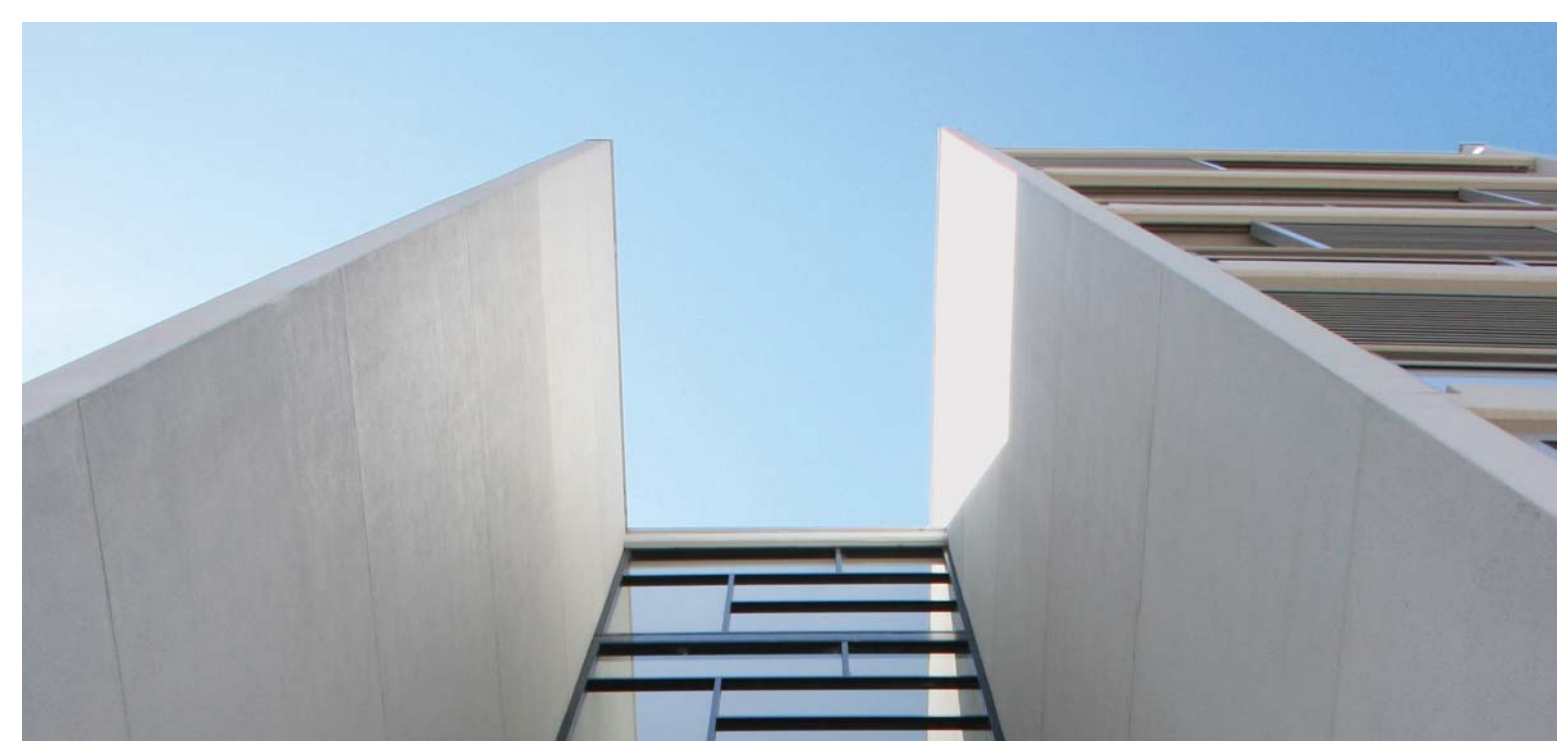
Disclaimers AFS has taken all reasonable care in producing this information, however AFS makes no representations or warranties, express or implied, as to the accuracy, reliability or completeness of, and disclaims all liability, direct or indirect (and whether or not arising out of the negligence, default or lack of care of AFS) for any loss or damage (whether foreseeable or not) suffered by the recipient or any other person arising out of, or in connection with any use or reliance by any of them on the Guides. Liability which cannot legally be excluded is limited to the maximum extent possible.

This guide is the copyright © of AFS Systems Pty Ltd ABN 455 760 727 88.



Building multi-residential apartments smarter, faster, better.





Well over
1,000,000m²
installed

Proven in
1,500+ projects

Used for 30,000
residential units

Lightweight innovative
design, impervious
to weather

Needs no finishing

Cost-effective answer
to conventional
methods

AFS LOGICWALL® and REDIWALL® permanent formwork walling systems for basements, penthouses and everything in between

Helping make multi-res go up quicker.
Much quicker.

AFS LOGICWALL® and AFS REDIWALL® walling systems are solutions for above and below ground, inside and out.

They have become first-choice for builders wanting rapid installation, consistently high quality and a long-life alternative to the slower conventional walling methods.

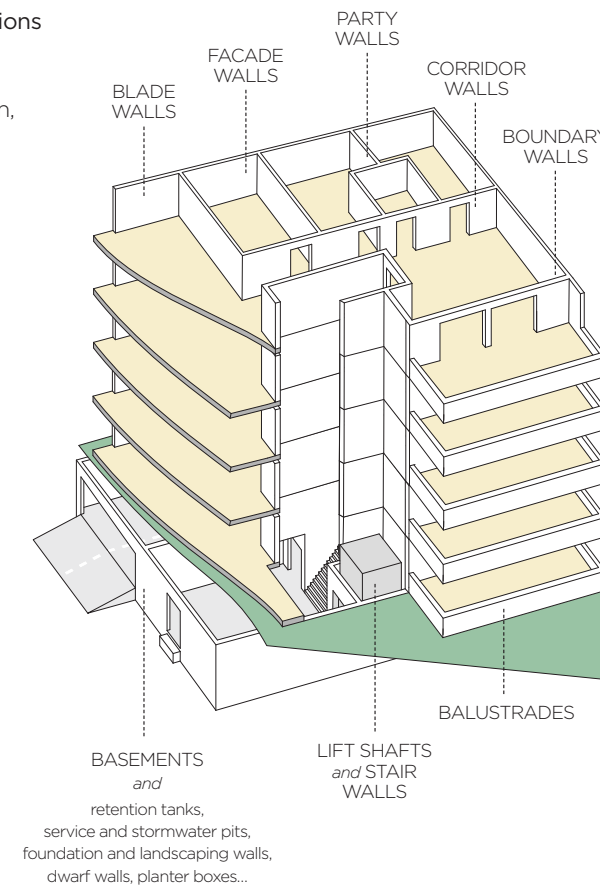
Used in thousands of projects, LOGICWALL® and REDIWALL® help control costs and schedules without sacrificing standards.

LOGICWALL® gives the advantage of:

- improved speed of construction
- materials-handling and cost efficiencies
- custom-made for each project, reducing on-site waste
- AS3600 and performance compliant
- structural and load-bearing capacity
- ease of design and specification
- GECA-certification
- consistent high quality finish

REDIWALL® offers many benefits, including:

- improved speed of construction
- ease of installation and materials handling
- lightweight durable design
- AS3600 compliant—fire, heat and smoke certification
- semi-gloss high quality low maintenance finish
- water resistant



“AFS LOGICWALL® provided benefits with time and quality, allowing us to mitigate risk”

Steve Riches
Construction Projects Manager
JOHN HOLLAND

Load-bearing and guaranteed to last at least as long as conventional concrete structures, AFS LOGICWALL® has many advantages. But builders are most attracted to what it doesn't have.

Being lightweight means deliveries are quickly unloaded and readily shifted into place so it doesn't present the materials handling problems of other walling systems.

LOGICWALL® also arrives sized to your project and labelled for placement which means it doesn't incur the construction penalties of slower, labour-intensive methods.

Importantly, LOGICWALL® is AS3600 compliant for internal and external use, with a life expectancy equal to or greater than fifty years.



HOW QUICK?

Lightweight but load-bearing, three men can put up 100m² of LOGICWALL® in just one day.

UP TO 30 FLOORS

“On a \$40m project AFS helped with speed of construction, safer handling and a great finish”

David Alty
Projects Manager
COCKRAM

AFS REDIWALL® offers builders a quick, cost-effective solution to any basement project, whether it involves long-runs or complex customising.

The ingenious panels are polymer-based and can be supplied sized-to-fit or readily sawn on site. And their light weight makes deliveries and materials handling easier, especially where access is difficult.

Installation can be done by any formworker as the pieces, including corners, are simply slid in to connect against each other onto a track.

REDIWALL® provides a clean, even, water resistant, low-maintenance surface that doesn't require finishing. No wonder builders keep using it to save time and money.



HOW VERSATILE?

Basements, retaining walls, retention tanks, storm-water and service pits, dwarf and landscape walls...

DOWN TO 5 FLOORS