

# PVC-based Permanent formwork

Lightweight, load-bearing

Ideal for basements, columns, blade and party walls, lift and stair cores, retention tanks, retaining walls and landscaping.



# PVC-based permanent formwork walling system for above and below ground application.



**AFS Rediwall**® is a PVC permanent formwork system and a time-saving alternative to conventional masonry and blockwork. Its precision-extruded components easily interconnect for rapid installation and there is no specialised training needed.

CodeMark Certified and AS3600-compliant, Rediwall® is load-bearing for multi-level structures. It presents a consistently even, water-resistant and durable surface that often doesn't require any finishing.



Largest range of profiles provides the versatility needed for most internal and external walling.



PVC-based and delivered to-size for ease of materials handling and faster installations.



Load-bearing with CodeMark Certification, AS3600 compliance and water resistance.

# One system provides the complete above and below ground walling solution.

Efficient, adaptable, and built for performance, AFS Rediwall® simplifies installation while ensuring superior results on every project.

## Architects

- ▶ System maximises saleable floor space for clients.
- ▶ CodeMark Certified, AS3600 compliant and water resistant.
- ▶ Choice of six profile widths and comprehensive catalogue of components — one system, one solution.
- ▶ Panels provide a superior, semi-gloss surface with option for further finishing.

## Engineers

- ▶ Simple reinforcement—single and double.
- ▶ Full width concrete core thickness.
- ▶ Simple robust bracing methodology.
- ▶ Quick reinforcement inspection with Ezy-Fit™ removable corners.
- ▶ Large holes for optimum concrete placement.

## Builders

- ▶ Significantly quicker floor-cycles, can save days even weeks compared to conventional masonry and blockwork.
- ▶ No craneage necessary.
- ▶ Significantly less waste and mess than blockwork.
- ▶ Most economical alternative to a conventional shoring wall available.
- ▶ Fewer trades needed and sites are kept cleaner and more efficient.
- ▶ Panels provide a superior, semi-gloss surface with the option for further finishing.

## Installers

- ▶ Panels can be delivered cut-to-size or easily cut down for late changes.
- ▶ Reinforcement is simple and fast to install and inspect.
- ▶ Panels can snap or slide together, allowing speed of installation.
- ▶ Installation is simple to learn and onsite training is available through AFS.



# Industry-leading innovation for fast, trouble-free installation.

The extruded PVC components simply snap or slide readily into place. Assembly is rapid and the resulting wall surface is clean and even.



## RW110 Snap-in™

### Lengths:

2.8m, 3.0m,  
3.2m, 3.6m

### Accessories:

Ezy-Fit™ Corner, H-Joiner, T-Joiner,  
Floor Track, End Cap, FC Strip



## RW156 Snap-in™

### Lengths:

2.8m, 3.0m,  
3.2m, 3.6m

### Accessories:

Ezy-Fit™ Corner, H-Joiner, T-Joiner, J-Track,  
F/F Joiner, Floor Track, End Cap, FC Strip,  
115mm Spacer, F/F Column Panel



## RW200 Snap-in™

### Lengths:

2.8m, 3.0m,  
3.2m, 3.6m

### Accessories:

Ezy-Fit™ Corner, H-Joiner, T-Joiner, J-Track, F/F  
Joiner, Floor Track, End Cap, FC Strip, 115mm  
Spacer, F/F Column Panel, Curve Panel, VBL 200



## RW256 Slide-in

### Lengths:

2.8m, 3.0m,  
3.2m, 3.6m

### Accessories:

End Cap, QuickCap™ End Cap, F/F Joiner,  
Floor Track, FC Strip, H-Joiner, VBL 256



## RW275 Slide-in

### Lengths:

3.0m, 3.6m

### Accessories:

End Cap, F/F Joiner, FC Strip, H-Joiner, VBL 250+



## RW300 Slide-in

### Lengths:

3.0m, 3.6m

### Accessories:

End Cap, F/F Joiner, FC Strip, H-Joiner, VBL 250+

## Benefits include:



Speed of construction



Ease of materials handling



Load-bearing structure



Ezy-Fit™ corner panels slide open for access



AS3600 compliant



Fire performance



Lightweight, durable system



Above and below ground versatility



Easily snap or slide panels into place



CodeMark certified compliance assured



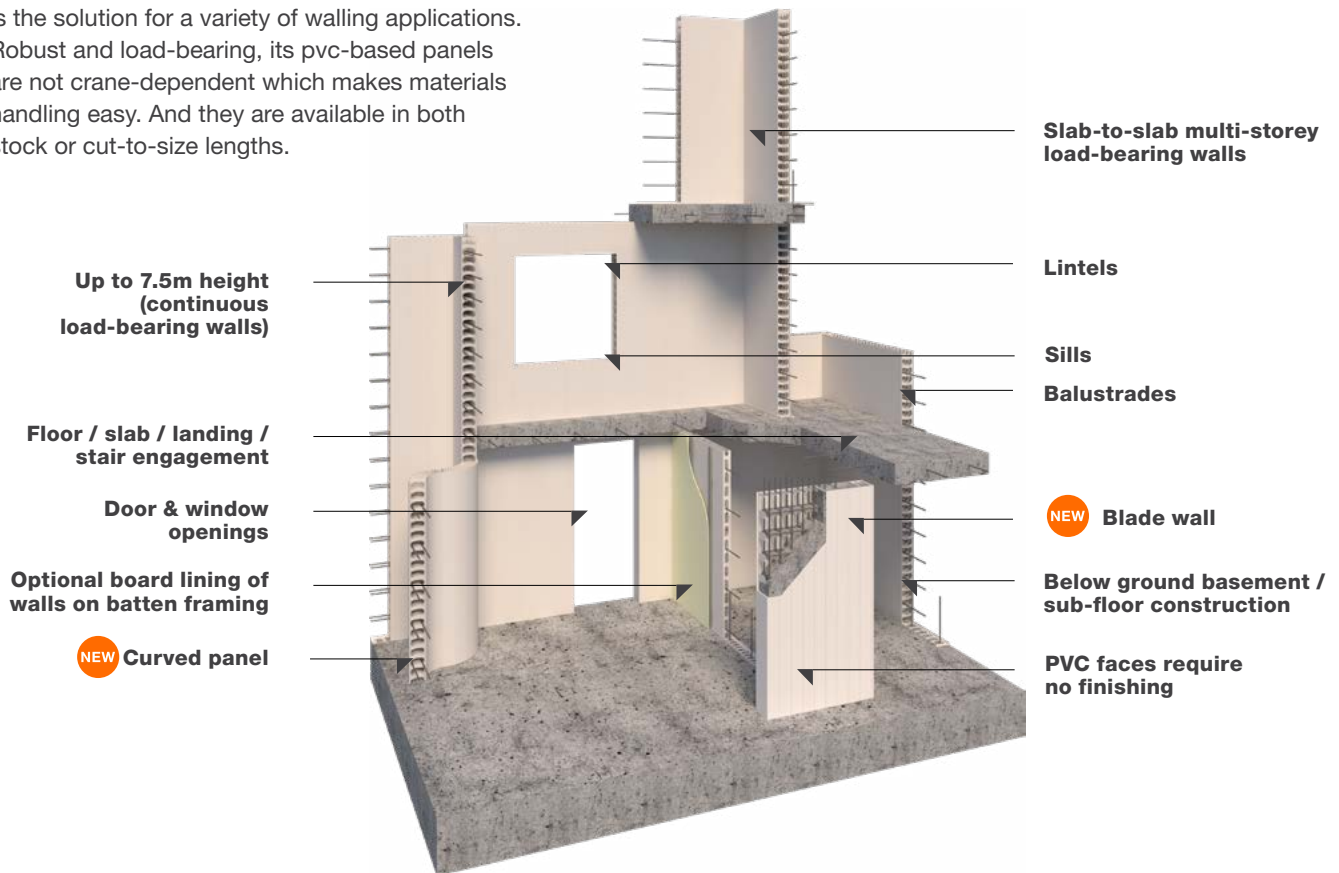
Water resistant



Significant waste reduction

## Industry-leading range of profile widths.

With six profile widths, the AFS Rediwall® system is the solution for a variety of walling applications. Robust and load-bearing, its pvc-based panels are not crane-dependent which makes materials handling easy. And they are available in both stock or cut-to-size lengths.



RW110  
Snap-In



RW156  
Snap-In



RW200  
Snap-In



RW256  
Slide-In



RW275  
Slide-In



RW300  
Slide-In

### Wall Thickness

105mm      150mm      194mm      250mm      269mm      294mm

### Filled Wall Mass (kg/m²)

252      360      466      600      646      706

### Application

Party walls

Basements, party and blade walls, retaining walls and retention tanks, service and stormwater pits

Basements, party and blade walls, columns, retaining walls

### Acoustic Rating (Rw) Rw + Ctr

50      56      58      61      (>60)      (>60)  
45      50      53      54      >55      >55

### Max Fire Resistance Level (based on CSIRO testing)

90/90/90      240/240/240      240/240/180      240/240/240      240/240/240      240/240/240  
(N\*f<152 kN/m,      (N\*f<333 kN/m,      (N\*f/ØNu=0.53)<sup>#</sup>      (N\*f/ØNu=0.54)<sup>#</sup>      (N\*f/ØNu=0.69)<sup>#</sup>      (N\*f/ØNu=0.70)<sup>#</sup>  
Hwu<2700)<sup>##</sup>      Hwu<3000)<sup>##</sup>

### Design Axial Capacities<sup>#</sup> (kN/m)

315      450      2015      2731      2968      3277

<sup>#</sup> Based on AS3600-2018 with Hwu=3000, f'c=32 Mpa UNO

<sup>##</sup> Based on CSIRO Fire Test Report Number FSV1704, SGA Evidence of Suitability Report 2013/277.65 R1.2

<sup>#2</sup> 2 layers of reinforcement



# AFS Rediwall® Accessories.

## **Ezy-Fit™ Corner** with removable cover is an industry-first.

Ingenious corner covers slide up and down for easy placement of reinforcement and inspection prior to core filling.



## Revolutionary Ezy-Fit™

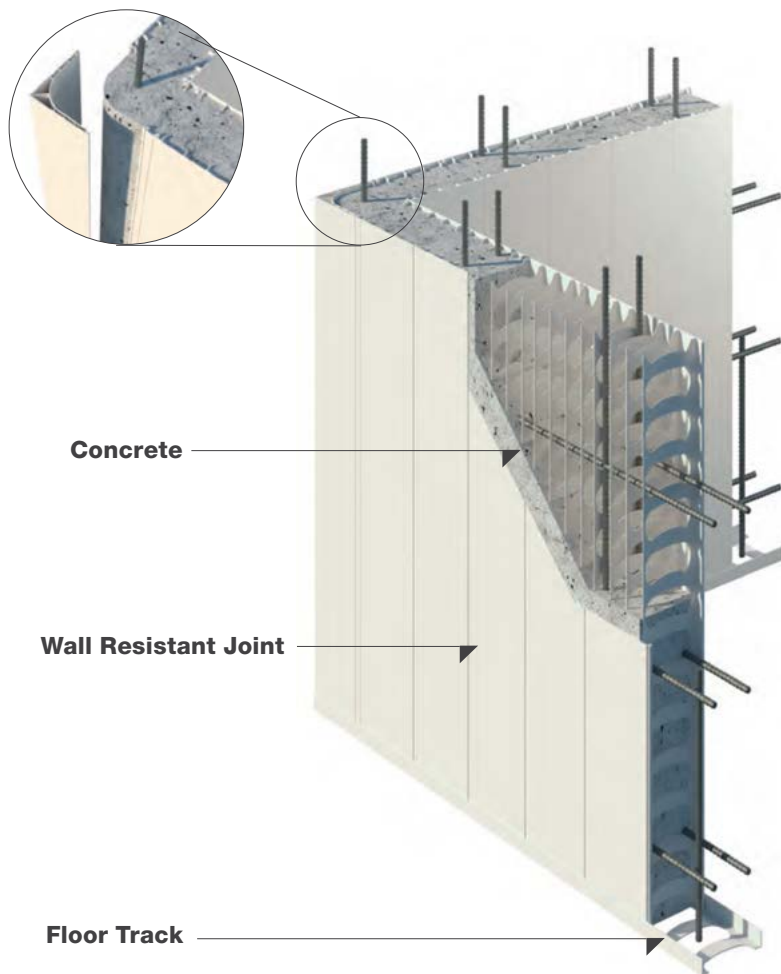
Open-back corner gives unobstructed access for trouble-free installation of reinforcement bars. Certifying engineers simply remove the cap to approve placement prior to pouring concrete — that's not possible with conventional systems.

## Industry-first: Ezy-Fit™ Corners

The outer cover effortlessly slides up for trouble-free access to reinforcement. With everything in place, it simply slides back to allow core filling.



Outer cover slides  
up for access



## Comprehensive walling system



Curve Panel

Corners

H-Joiners

T-Joiners

J-Track

115 Spacers

End Caps

Floor Track

The Rediwall® system offers an exhaustive range of accessories — specific to each profile width, including everything you need to make curved and straight walls, above or below ground.

[Learn more about AFS Rediwall® accessories](#)

# Patented Speedy Snap-In™ System ensures easier, faster installation.

It's as easy as snap, brace, pour!

110mm, 156mm and 200mm PVC-based panels simply snap-in together, while the 256mm, 275mm and 300mm profiles utilise a slide-together action.

Regardless of the interlocking mechanism, Rediwall® panels can be quickly installed and braced for corefilling, without specialised training or trades.



**Step 1** Lightweight panels make for easier materials handling.



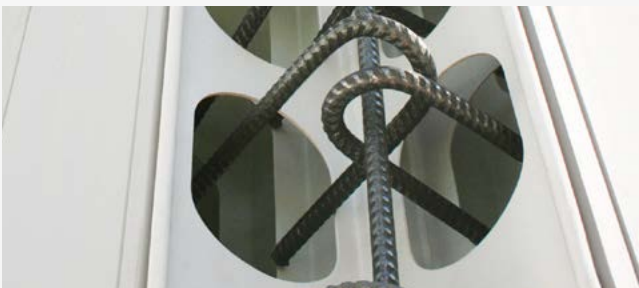
**Step 2** Panels effortlessly interlock with snap-in or slide-together mechanisms.



**Step 3** And simply slide down to seat into the floor tracking and form a wall.



**Step 4** Bracing.



**Step 5** Reinforcement placement.



**Step 6** Core filling.



# After-Sales Service.

*Our After-Sales Service team offers customers hands-on assistance on-site.*

[Contact Us](#)



# Installation Guide.

By design the AFS Rediwall® system can be installed with little or no training, using the assistance of our Installation Guide.

[Download AFS Rediwall Installation Guide](#)



# AFS Rediwall® meets or exceeds **all critical building performance requirements.**

## Compliance & Certification

AFS Rediwall® is one of the industry's most tested permanent formwork systems.



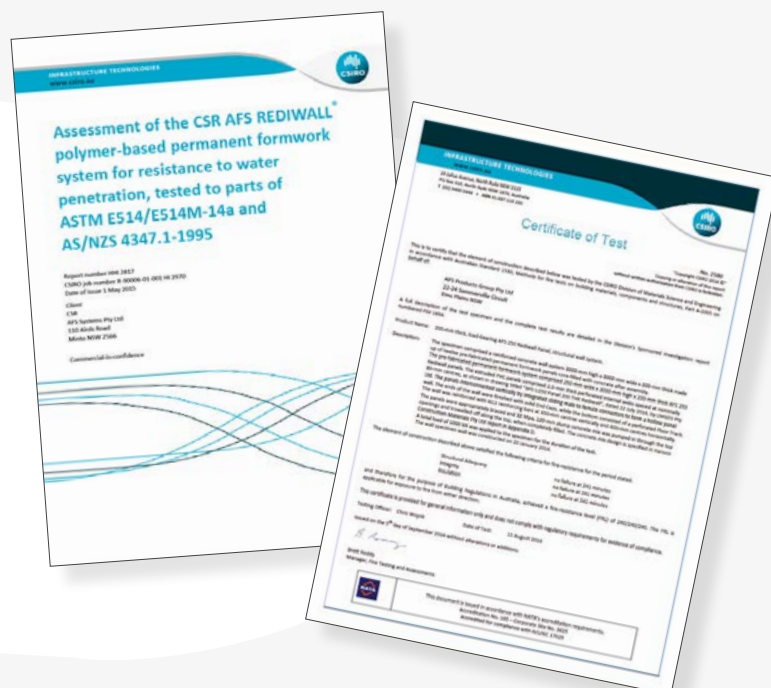
## CodeMark Certified

AFS Rediwall® complies with NCC performance requirements for:

- ▶ Fire resistance/non-combustibility
- ▶ Structural stability (AS3600)
- ▶ Weatherproofing
- ▶ Sound insulation
- ▶ Bushfire provisions (BAL)
- ▶ Termite resistance

## Water Performance— CSIRO Certified

Recognising the importance of resistance to water penetration, testing has been undertaken whereby Rediwall® panels were interlocked, core-filled with concrete and exposed to 6m hydro static head of pressure for a period of 100 hours as per ASTM E514/E514M and AS/NZS 4347.1 testing and passed for no water penetration.

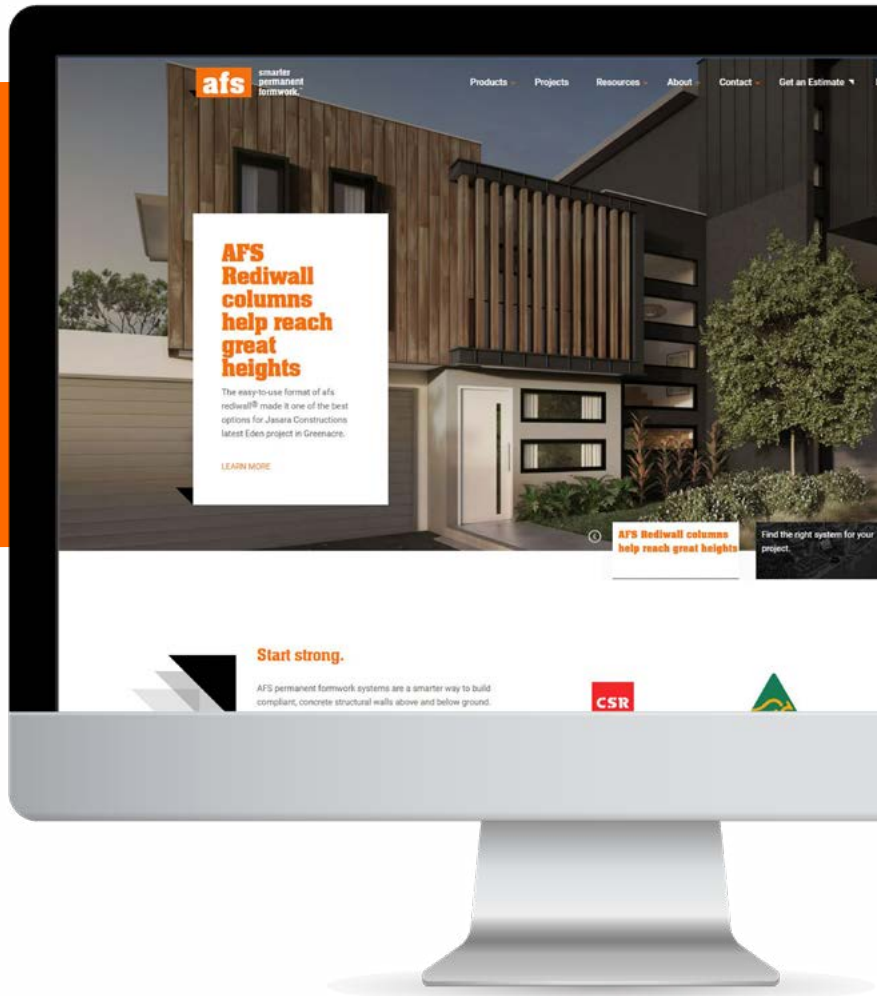


**In-house and on-hand:  
AFS experts can help  
with your project.**

**Talk to our experts:  
AFS offers architects,  
engineers and builders  
a wealth of technical  
reference and in-house  
engineering, drafting and  
estimating expertise.**

This ensures a customer can get the best advice on a project at concept design or when plans are available. Building professionals enjoy how easy the AFS website makes it to upload plans for assessment and estimation.

**Visit our website**



Customers enjoy ready reference to technical manuals, papers and design guides.

Download



## Fire testing for AFS Rediwall® includes:

### Fire Performance

Expert assessment based on extensive fire testing of Rediwall® for both internal and external application confirms compliance to the following NCC performance requirements:

- ▶ CP1 Structural stability
- ▶ CP2 Spread of fire
- ▶ CP3 Spread of fire and smoke / aged care buildings
- ▶ CP4 Materials and assemblies
- ▶ CP7 Emergency equipment
- ▶ CP8 Openings and penetrations



### AS5113/BS8414 Façade Test

Passes in 'No spread of flame', 'Temperature rise limit criteria', and 'No flaming'.

### AS5637.1 Reaction to Fire (Room Test)

- ▶ Group Number 1 can be used in all building types and classes
- ▶ Smoke Growth Rate Index: SMOGRARC 28.3m²/s² x1000

### AS1530.3 Fire Hazard Properties

- ▶ Ignitability index - 10
- ▶ Heat evolved index - 0
- ▶ Spread of flame index - 0
- ▶ Smoke developed index - 6

### AS1530.4 Fire Resistance Level (FRL)

AFS Rediwall®	Max. FRL.
RW 110	90/90/90
RW 156	240/240/240
RW 200	240/240/240
RW 256	240/240/240
RW 275	240/240/240
RW 300	240/240/240

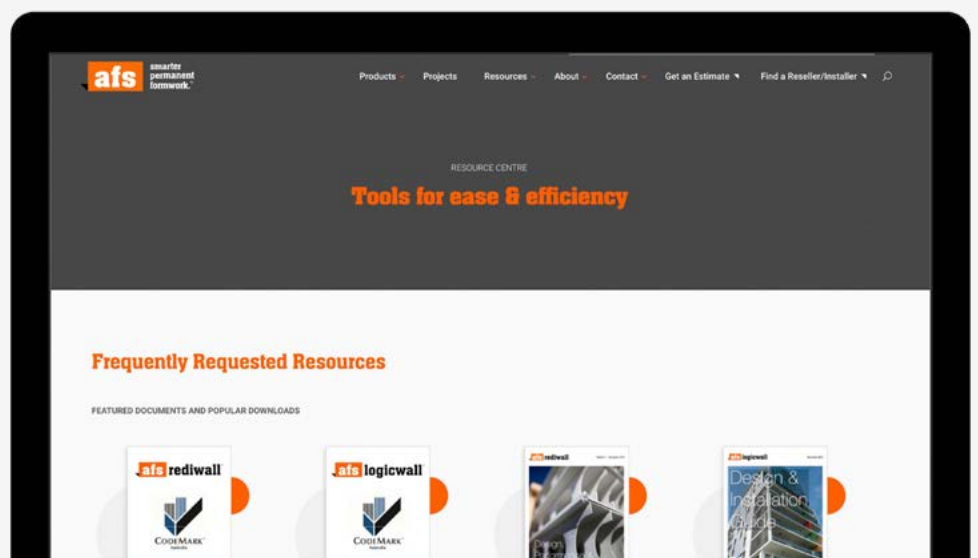
### AS1530.4 FRL Service Penetrations

AFS Rediwall®, containing various service penetrations, has been tested and assessed to AS1530.4 to achieve a fire resistance level FRL -/120/120 with the PVC facing left in place.

## Need more information?

Learn more about the compliance credentials of AFS Rediwall® by visiting our website or contact our Technical Team on **2411 838 348**.

[Visit our website](#)





**AFS Systems Pty Ltd**

(C) 2024 AFS Systems Pty Ltd ABN 455 760 727 88

**110 Airds Road, Minto NSW 2566 | 1300 727 237 | [afsformwork.com.au](https://afsformwork.com.au)**

**Disclaimer:** Information presented in this document is supplied in good faith and to the best of our knowledge was accurate at the time of preparation. The provision of this information should not be construed as a recommendation to use any of our products in violation of any patent rights or in breach of any statute or regulation. Users are advised to make their own determination as to the suitability of this information in relation to their particular purpose or specific circumstances. Since the information contained in this document may be applied under conditions beyond our control, no responsibility can be accepted by AFS or CSR, or its staff for any loss or damage caused by any person acting or refraining from action as a result of misuse of this information.

